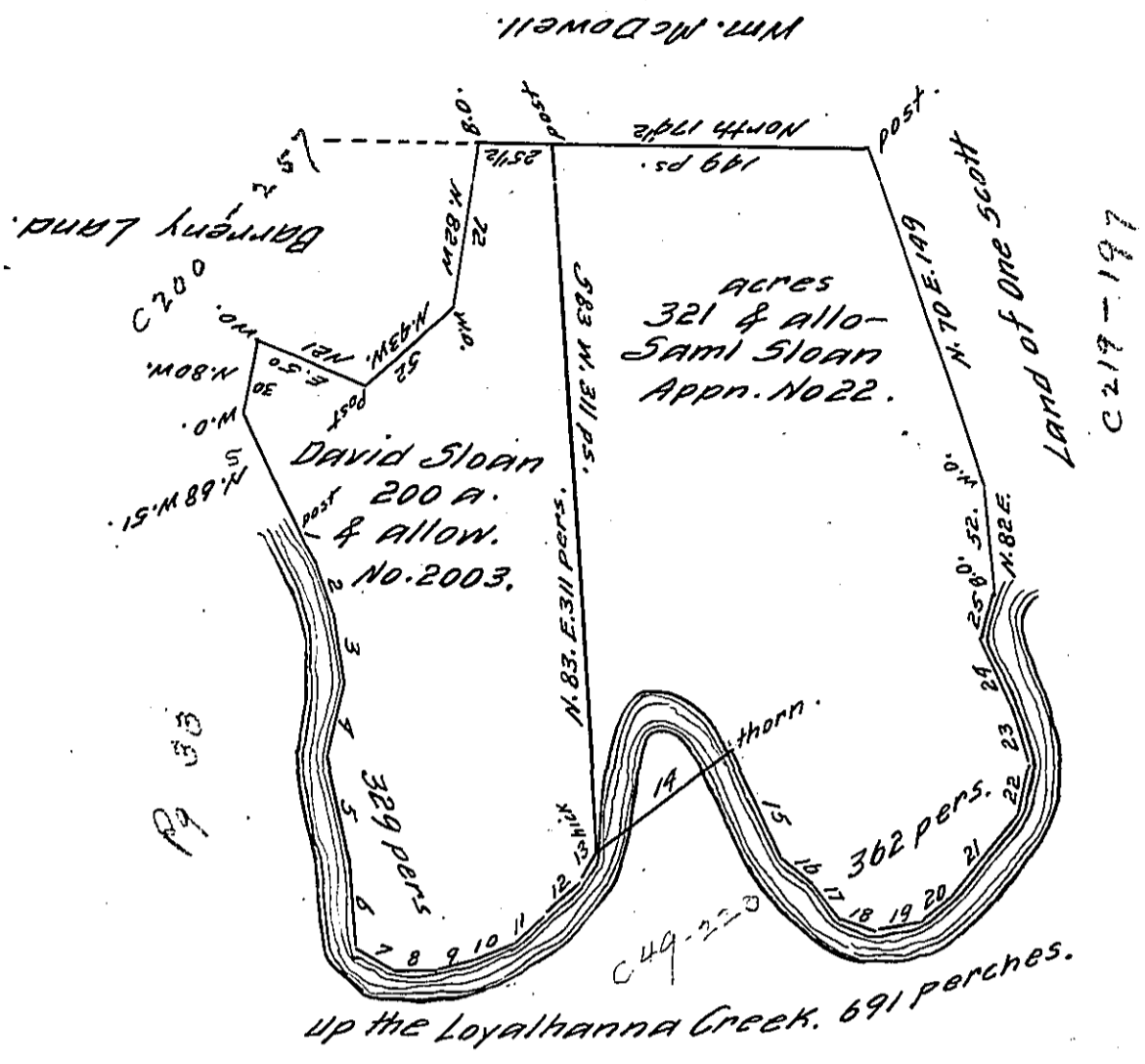


See B 23 - 68

No.	Courses up the creek	Distance
1	539W	10
2	5.67W	38
3	5.82W	28
4	579W	38 = 38
5	576W	44 = 576W.
6	5.84W	40
7	5.26W	16
8	5.2W	23
9	5.19E	12
10	5.17E	14
11	532E	26
12	547E	28
13	5.62E	12 = 329
14	5.37E	75
15	5.63W	42
16	5.53W	27
17	5.49W	13
18	5.20W	19
19	5.12E	24
20	534E	14
21	001.	
22	5.82E	17
23	N.74E	29
24	N.70E	36
25	5.80E	15 = 362.
totl Distance		691



In pursuance of two Orders No. 22 & 2003 both dated the 3d of April 1769. Survey'd for Samuel Sloan & David Sloan the above Described tract of Land containing five Hundred & twenty one Acres, with an allowance proportioned to six per cent. Situate on the East side of Loyalhanna Creek opposite the Mouth of ten Mile Run. Including the Improvements in Westmoreland County. Survey'd the 12th of October 1769 p.

To John Lukens Esquire.  
S. Genl.

Robert McCrea  
D.S.

IN TESTIMONY that the above is a copy of the original remaining on file in the Department of Internal Affairs of Pennsylvania, made conformably to an Act of Assembly approved the 16th day of February, 1833, I have hereunto set my Hand and caused the Seal of said Department to be affixed at Harrisburg, this sixth day of April 1911

*Henry Houch*  
Secretary of Internal Affairs.